



**City of Osseo Transportation Plan  
Steering Committee Meeting**

**Osseo City Hall  
Monday, May 1, 2017  
6:00 p.m. to 7:00 p.m.**

**Agenda**






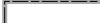


1. Introductions.
2. Background of Process and Met Council Requirements.
3. Discussion of Modal Issues.
  - a. Roadway
  - b. Bicycle/Pedestrian
  - c. Transit
4. Next Steps and Adjournment.

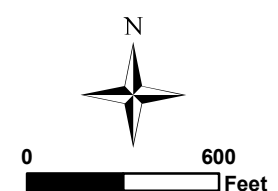
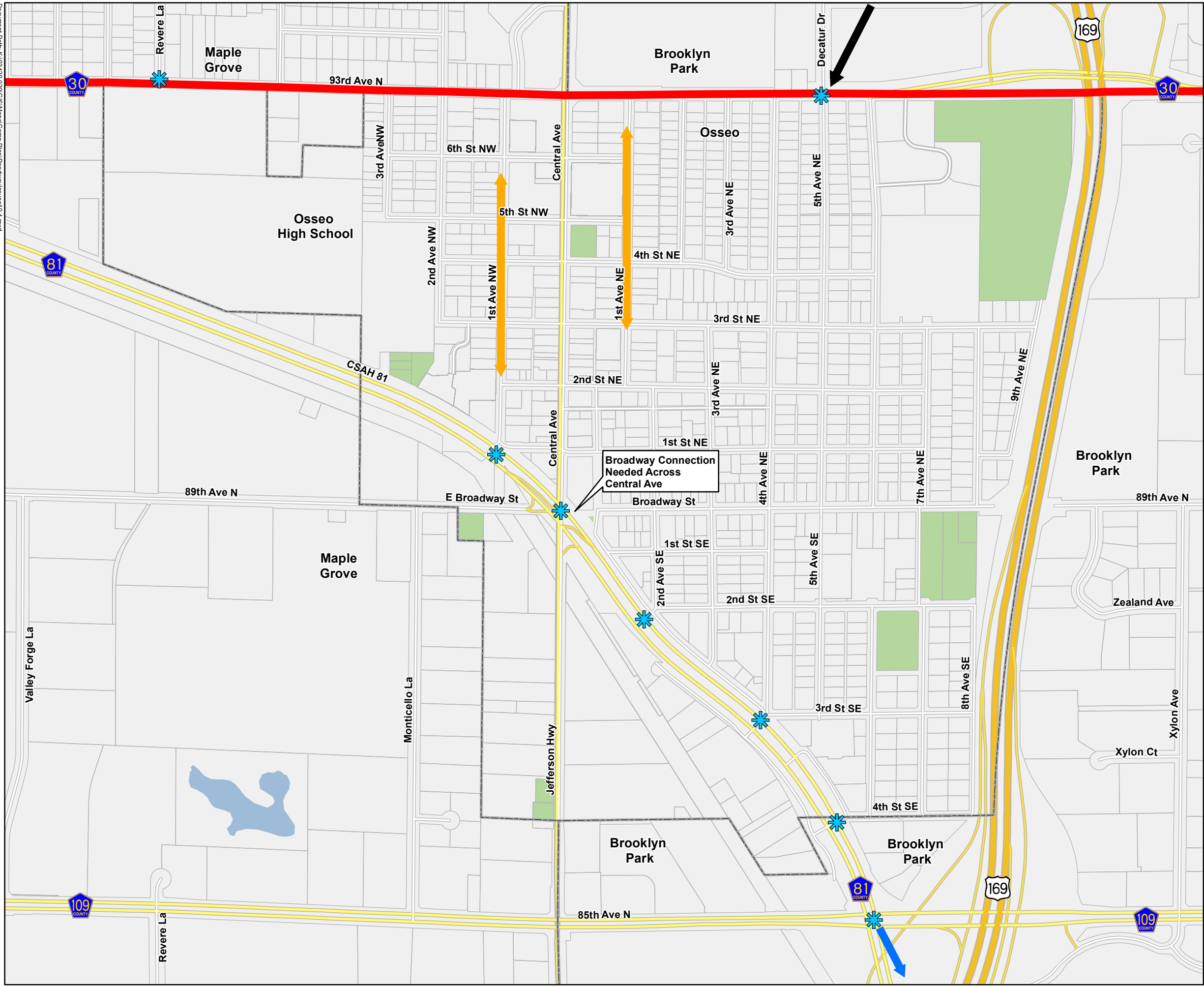
Document Path: K:\032929\GIS\Mapst Comp Plan\RoadwayIssues\01\_4.mxd



# Osseo Comprehensive Plan Roadway Issues Osseo, MN

## DRAFT FOR DISCUSSION

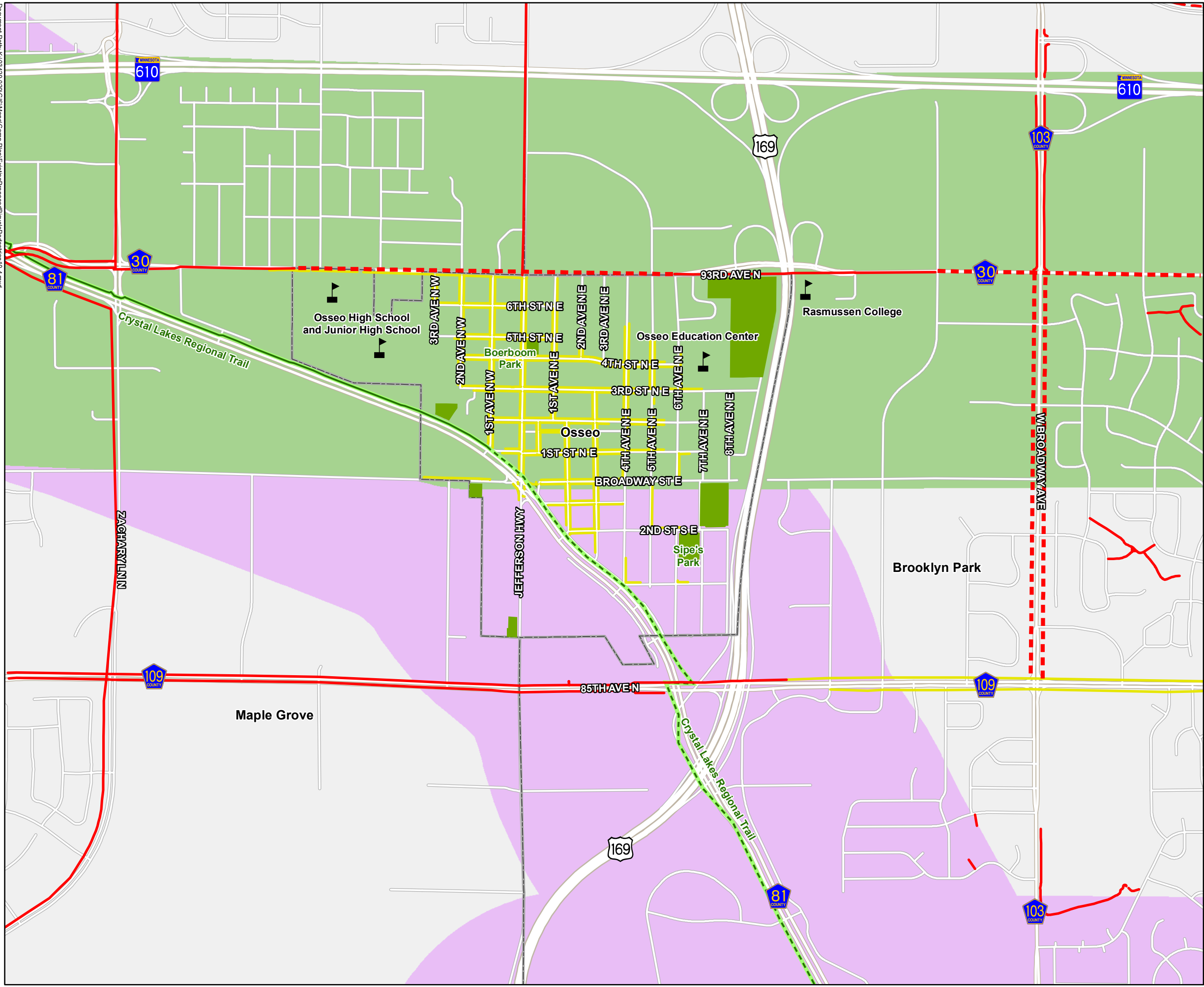
-  Intersection Operation/Safety Issue
-  Proposed County to City Turn Back- Hennepin County Plan
-  Brooklyn Park New Development Roadway Traffic Concern
-  Possible 6-Lane Expansion
-  Improve Parallel Corridors to Central Avenue
-  Osseo City Boundary
-  Parks
-  Lakes



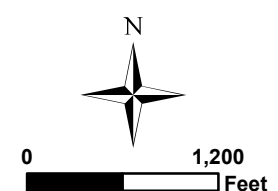
Document Path: K:\034299\2016\GIS\Mapst Comp Plan\ExistingProposedBicyclePedestrian10\_4.mxd



# Osseo Comprehensive Plan Existing & Proposed Bicycle/Pedestrian Facilities Osseo, MN



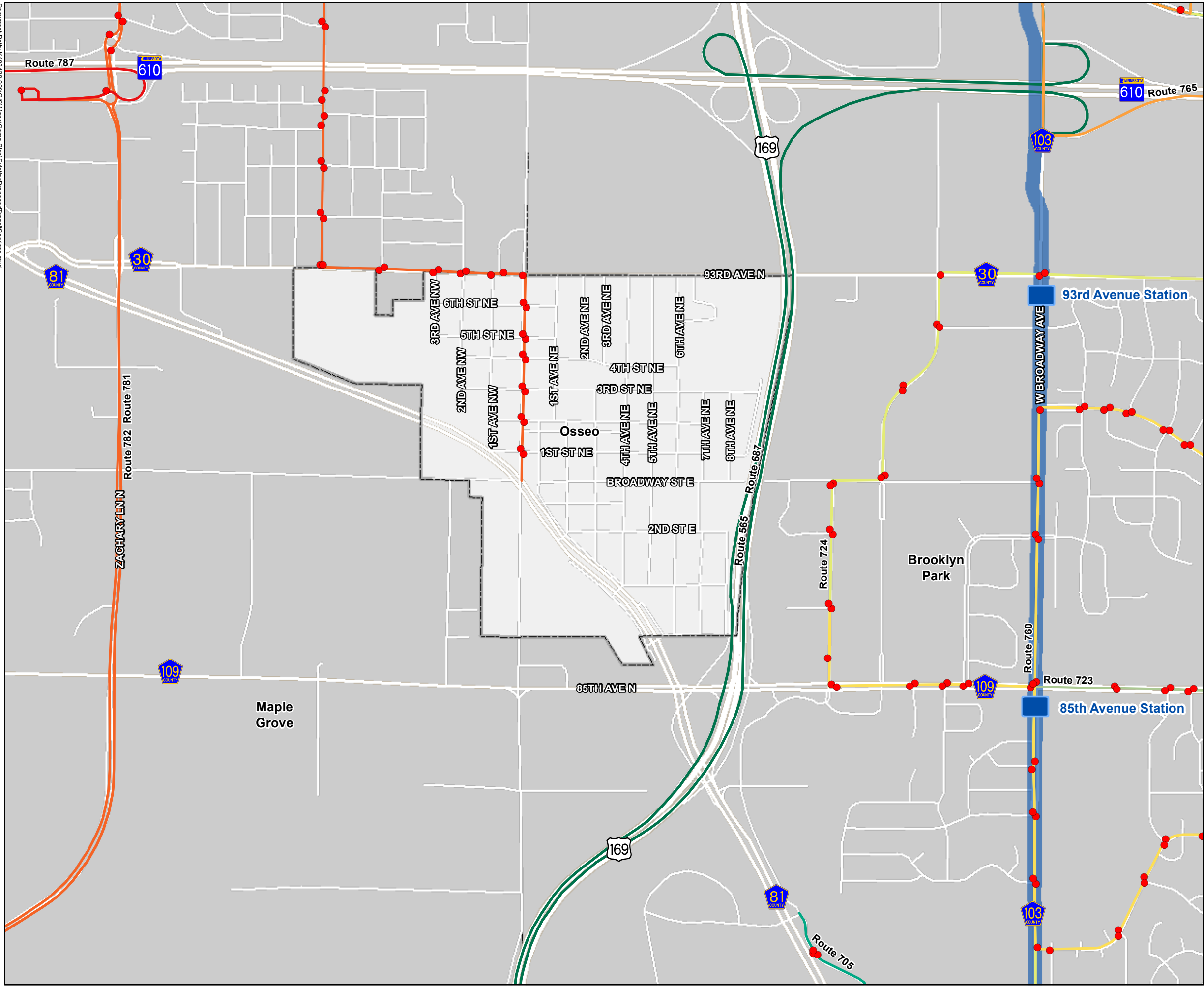
- Schools
- Existing Trail
- Planned Trail
- Existing Sidewalk
- Regional Trails**
  - Existing
  - Planned
- Parks
- Osseo City Boundary
- RBTN Corridors**
  - Tier 1 Corridor
  - Tier 2 Corridor



Document Path: K:\034294\GIS\Mapst Camp Plan\ExistingProposedTransitServices.mxd



# Osseo Comprehensive Plan Existing & Planned Transit Service & Infrastructure Osseo, MN



**Existing Bus Route**

- 565 & 687
- 705
- 723
- 724
- 760
- 765
- 781 & 782
- 787
- Bus Stop
- Planned Blue Line LRT Extension
- Planned Blue Line Station
- Osseo City Boundary

